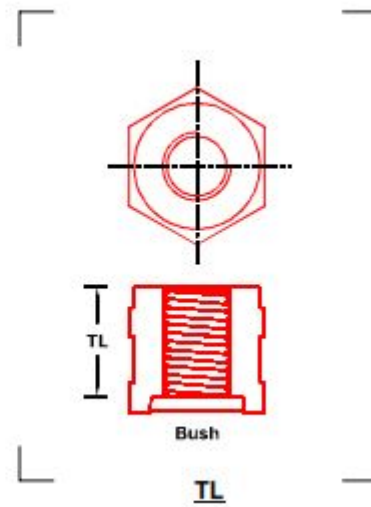
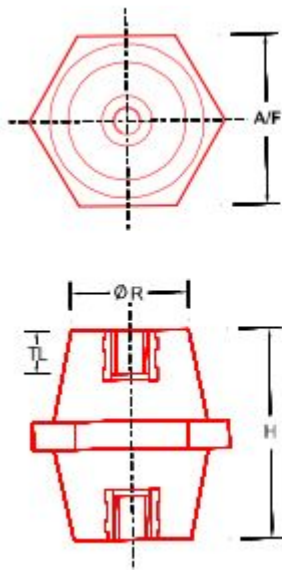




Hexagonal insulators

Description

Hexagonal insulators



Type	H (mm)	Rt. mm	Dimension Rb mm	TL mm	Nominal Voltage (AC/DC)
H 620	20	18	14	8	300/400
H 625	25	21	16	7	400/500
H 630	30	33	25	7	600/750
H 635	35	33	26	9	600/750
H 830	30	33	26	9	600/750
H 835	35	33	26	9	600/750
H 840	40	40	30	15	1000/1200
H 845	45	40	32	15	1000/1200
H 850	50				
H 1035	35	33	26	12	600/750
H 1040	40	40	30	15	1000/1200
H 1045	45	40	32	15	1000/1200
H 1050	50	46	37	20	1000/1500
H 1060	60	50	38	20	1500/1800

H 1065	65	55	41	25	1500/1800
H 1070	70	55	41	25	2000/2400
H 1075	75	55	42	25	2000/2400
H 1075 E	76	50	33	25	2000/2400
H 1260	60	50	38	20	1500/1800